

Upgrade Tool Driver v1.1

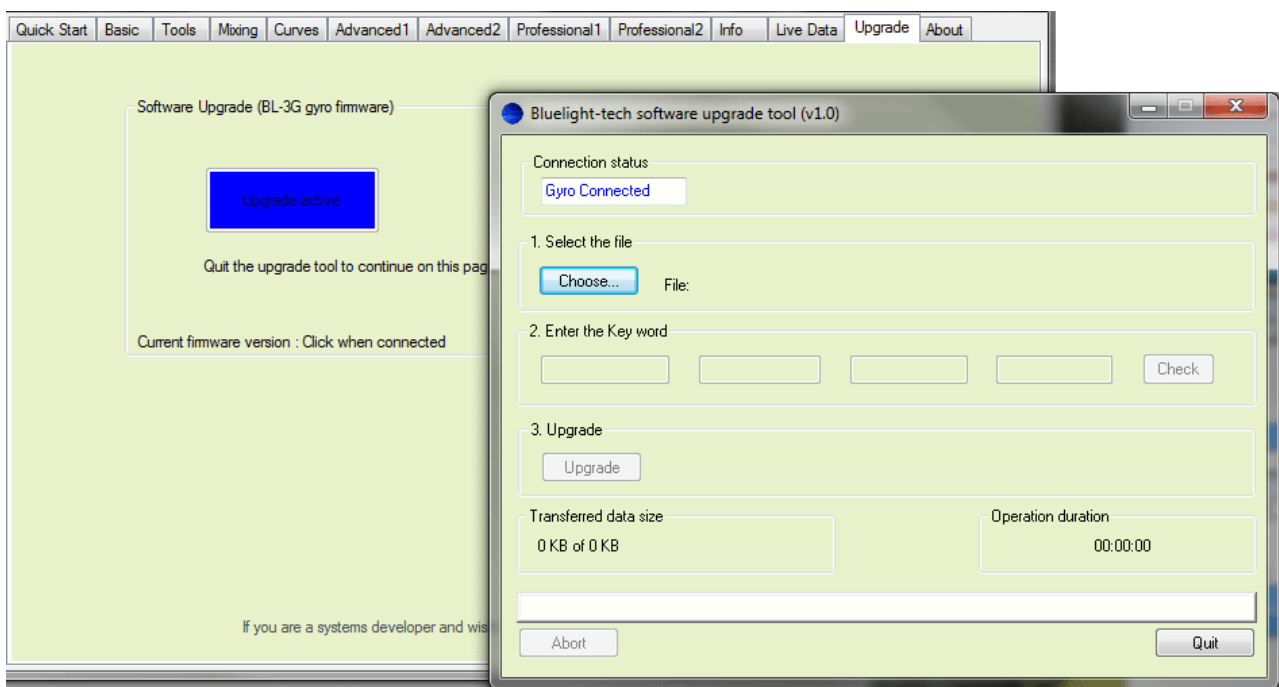
1.0 Introduction

It has come to our attention that some users may have a problem with the PC not identifying and loading the upgrade driver correctly. The following procedure can be followed to ensure the driver is correctly loaded.

2.0 ST Device in DFU Mode Driver

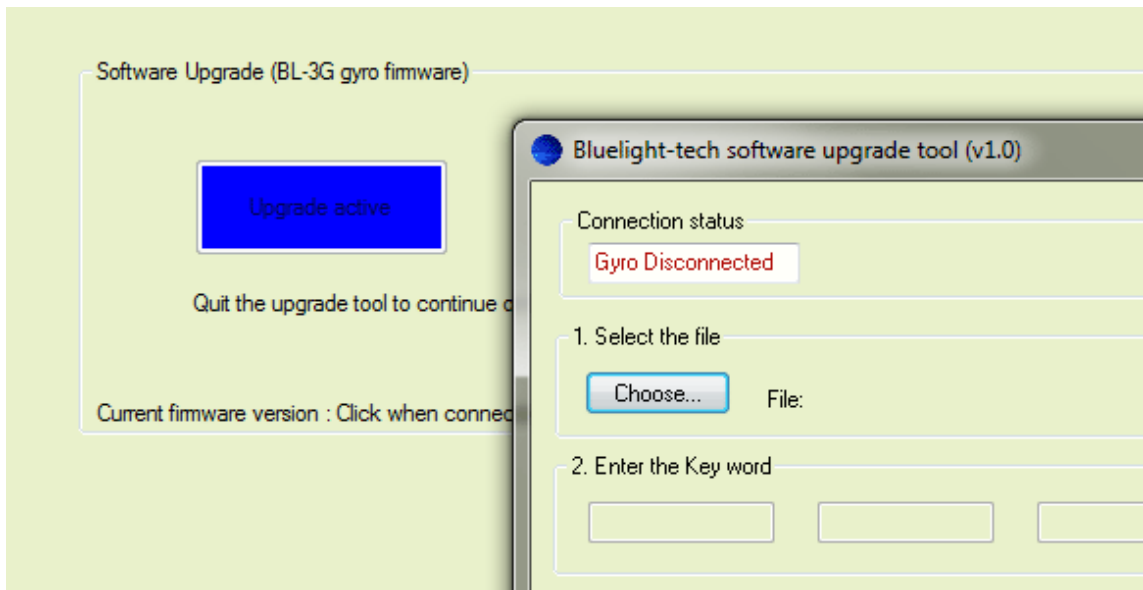
In order for new firmware to be installed the PC must have the **STM Device in DFU Mode** driver installed. Please perform the steps here to ensure this:

1. Install the Bluelight BL-3G PC set up software.
2. Launch the BL-3G Set up program and go to the *Upgrade* tab page
3. Press the big green *Launch* button. You should see the following:



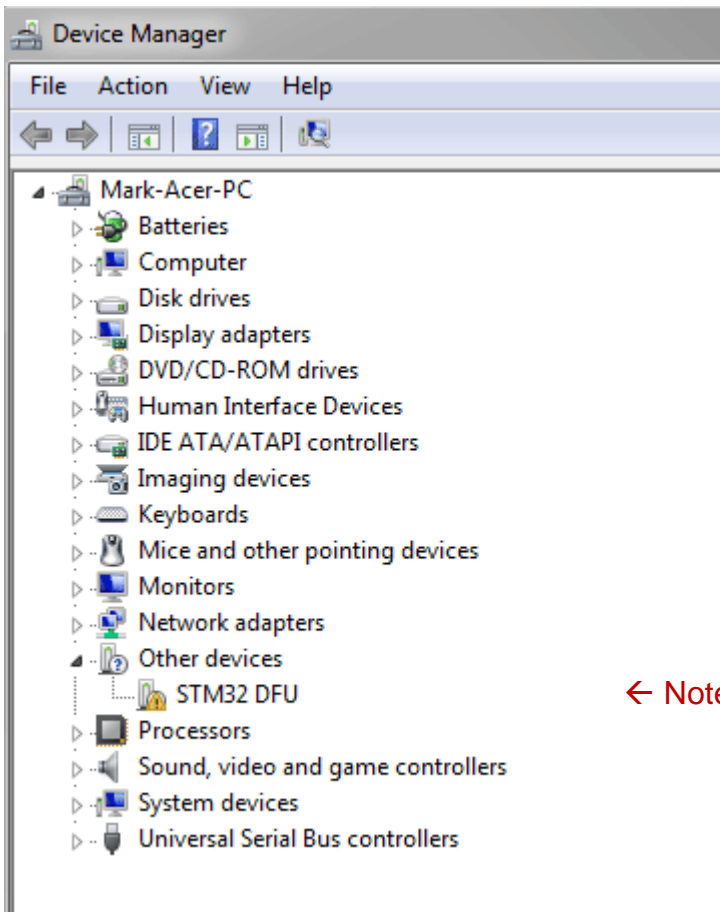
If you see the above then no further action is required.

However some users may see the following instead:



If this is the case then please perform the following tasks:

1. First try to unplug then plug back in the USB cable. (No need to do other steps if ok)
2. Go to the device manager of the PC (right click your Computer Icon, and select *properties*. Then select *Device Manager*). You should see something similar to this:



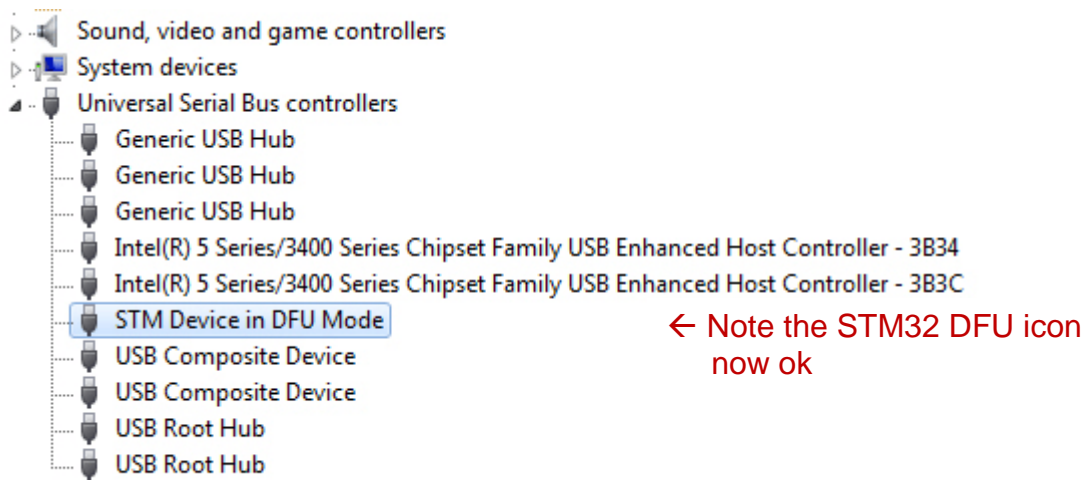
← Note the STM32 DFU icon

3. Right click the *STM32 DFU* icon, and click the *Update Driver* button. Then select the option to **search automatically for the updated driver software**

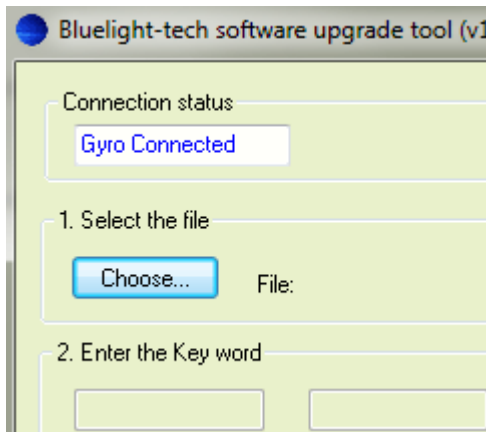
Alternatively, if you are not on-line, you can select *the Let me pick from a list of device drivers on my computer option*. Then select the following directory (i.e. the directory where you installed the program).

C:\Program Files (x86)\Bluelight

In the device driver window you should then see something similar to the below:



And the following **Gyro Connected** message should now be visible in the upgrade tool, and so the three steps to upgrade the firmware can now be followed.



If you still have problems, please e-mail us at sales@bluelight-tech.com

All content copyright © 2012 Bluelight Technologies Co. Ltd. UK and Thailand.
Thailand R&D: 199 / 206 Moo3, Soi Tha It, Rattanathibeth Road, Bangraknoi
Muangnonthaburi, Nonthaburi 11000.